

Architectural Outsourcing Services – Expand Your Business with Quick Ramp up Facilities

A look at the successful execution of a Building Project by off-loading design and drafting tasks to a responsible architectural drafting studio...



Client Profile

Winner of several distinguished awards like America's Best Builder; National Best Builder of the Year, the client designs and develops sustainable home buildings, residential colony and commercial buildings, with innovative design, quality construction and distinct home style with industry-leading warranty.

The Challenge

Being one of the largest home builders in U.S., the number of projects that the client needed to provide its clients was growing at an enormous rate, and they needed to deliver the building projects with a quick turn around time (TAT). The client was looking for a dedicated and responsible architectural drafting partner who could professionally develop construction documentation sets with a high degree of accuracy on-time and on-budget. They also needed construction documents should easily be modifiable.

BluEntCAD Approach

BluEntCAD was approached by the client with the task of learning about their service lines and using both AutoCAD and Revit software to develop easily modifiable construction documentation sets. BluEntCAD Project Manager (PM) started the engagement with the client; the workshare process was defined and set up; and responsibilities of each were defined in detail. While our client prepared Schematic Design (SD) and Design Development (DD), BluEntCAD had to develop Construction Documentation (CD) sets. The client provided SDs and DDs in varied formats, including PDF, JPEG, Scanned Paper, and Images. We engaged experienced BIM consultants for quality control. While working on SDs and DDs, our BIM experts would identify potential spatial conflicts. Regular video and desktop conferencing between the teams (client and BluEntCAD)

Architectural Outsourcing Services – Expand Your Business with Quick Ramp up Facilities

were set up in the overlap hours to go over design changes and marked up as redlines to be incorporated.

Employee Engagement Process: We engaged experienced BIM consultants for quality control. Given the volume of the drawings, BluEntCAD shifted to the “Engagement Model” (*BluEntCAD’s Internal Process of Resource Deployment*), and increased the number of draft persons.

Quality Assurance Process: While working on SDs and DDs, our BIM experts would identify potential spatial conflicts. Regular video and desktop conferencing between the teams (client and BluEntCAD)

were set up in the overlap hours to go over design changes and marked up as redlines to be incorporated.

This really helped the client remain up to date about the progress of the project and enabled

BluEntCAD to set up a stringent process for quality assurance.

Team Motivation: Regular interaction with the client’s team and designers highly

motivated our draftspersons. Each individual tried to ensure maximum accuracy from his/her end.

Each draft would go through levels of quality check. Members would cross quality check (QC) others work and share the findings. The Senior Draft Person would review the results. Finally, PM would view the entire project in a single environment in BIM and proceeded to prepare Construction Documentation sets.

Greater Productivity, Significant Time Savings

Within four months, BluEntCAD’s ability to deliver drafting services had increased threefold.

The integration among the BluEntCAD drafting team and design team of the client was so tight that BluEntCAD draftspersons got to know when a designer was going to get married or had a baby!

Within another two months, the number of projects had grown almost 10-fold. BluEntCAD

was maintaining the highest level of quality and the output delivered was matching their requirements greatly, leading the client and its clients to a higher level of satisfaction. Greatly satisfied the client decided to extend

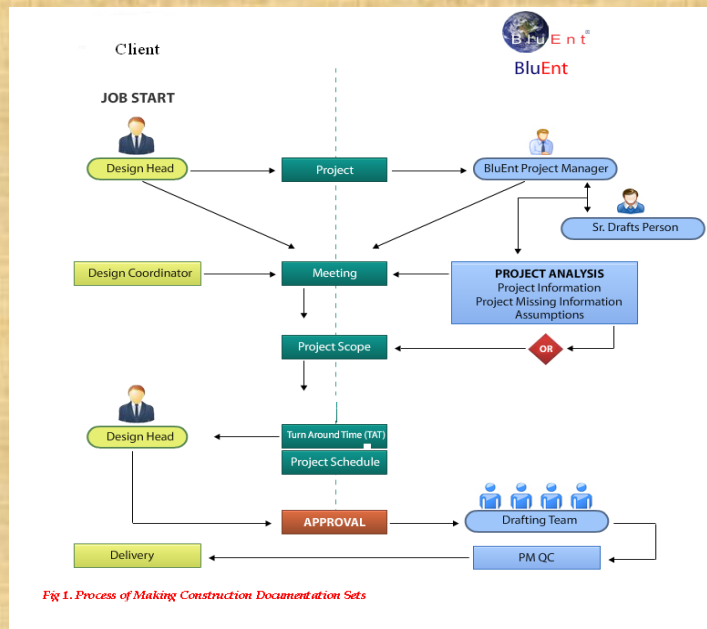
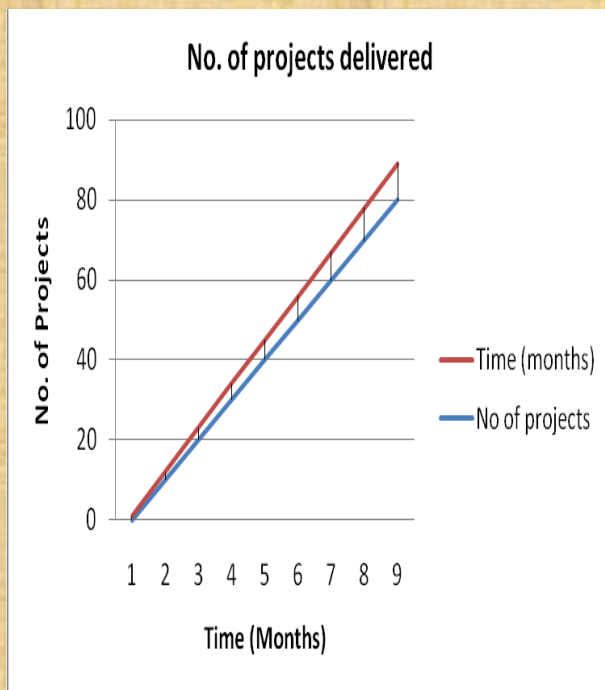


Fig 1. Process of Making Construction Documentation Sets

Architectural Outsourcing Services – Expand Your Business with Quick Ramp up Facilities

his requirements to other value added services. Engineers and Design head from the client's company visited BluEntCAD studio to train the draftspersons on other aspect of code compliance, quantity



generation and more value in architectural design and drafting services which they wanted to extend to us.

Within 3 months, the client could realize significant time savings as well as cost saving.

Most importantly, BluEntCAD created true value for the client. We received compliments not just from the client, but also from their consultants, engineers and construction managers. This is an ongoing story of being part of the client's success.

About BluEntCAD

BluEntCAD is specialized in providing BIM modeling services and outsourced architectural design & drafting services. BluEntCAD's service portfolio includes:

- ❖ CAD Solutions
- ❖ BIM Conversion
- ❖ AutoCAD to Revit
- ❖ Code Compliance
- ❖ Schematic Design
- ❖ Design Development
- ❖ CD Sets Preparation
- ❖ Shop Drawings
- ❖ Mill Working

USPs of BluEntCAD

From conceptual development to CD sets preparation through to identifying design conflicts and ensuring 100% precision, BluEntCAD provides architectural firms, home developers, real estate developers with a means to "**Maximum Value. Achieved.**"

BluEntCAD's Unique Service Positions (USPs) are:

- ❖ Extensive Knowledge
- ❖ Superior Quality
- ❖ Competitive Price
- ❖ Quick Delivery
- ❖ Extensive Revit Experience

Architectural Outsourcing Services – Expand Your Business with Quick Ramp up Facilities

Key Deliverables

Level 1

- ❖ Verify the Measurements and their Corresponding Effects
- ❖ BIM Construction Documentation
- ❖ CAD to BIM Conversion
- ❖ Identify Potential Spatial Conflict
- ❖ Conversion of GIF, JPEG, PDF, Images, Scanned Papers to Revit

Level 2

- ❖ Code Compliance
- ❖ Parametric Family Creation
- ❖ Bill of Quantities
- ❖ Material Quantity and Specifications
- ❖ Cost Estimation
- ❖ Energy Analysis

Benefits to the Client

With the Global Delivery Model, BluEntCAD helped the client leverage competitive advantages - cost advantage and quality advantage – over its competitors with its cost effective and quality-driven services developed in India. This translates into benefits such as quick ramp up capabilities and integrated service offerings

encompassing a wide array of architectural solutions.

Tangible Benefits

Cost Advantage:

- ❖ No Overheads Expenditure
- ❖ No Hidden Cost

Quality Advantage:

- ❖ Access to expertise of Trained Professionals
- ❖ Improved Quality

Intangible Benefits

- ❖ Increased Collaboration and Coordination
- ❖ Customer Satisfaction
- ❖ Customer Loyalty

Time Advantage

- ❖ Improved Delivery Time
- ❖ 24 Hours Work Sharing

Business Growth

- ❖ Free up Internal Resources
- ❖ More Focused Business
- ❖ Handling More Projects with Existing Workforce.

For more information about this case study and other services, contact BluEnt at info@bluentcad.com or visit www.bluentcad.com

***Greater Time-saving.
Greater Money-saving.
Greater Customer Satisfaction.***